



# CCAM

CONNECTED, COOPERATIVE  
& AUTOMATED MOBILITY

**ERTRAC Annual Conference 2025:  
Session Connectivity and Automation  
Keynote by Christian Merkt, CCAM Association**

[ccam.eu](https://ccam.eu)

# CCAM Partnership

## MISSION

Exploit the full systemic benefits of new mobility solutions

Assess impacts and understand user and societal effects to harmonise European R&I efforts to accelerate awareness and implementation of innovative CCAM technologies and services.

## GOAL

LIVE Large-Scale Demonstrations

To support the development and market uptake of connected and automated mobility and logistics services and systems thanks to Large-Scale Demonstrations.



Founded in  
2021



Budget:  
+1 Billion

Visit  
[CCAM.EU](https://ccam.eu)



+230  
Members



Cross-sectoral  
value chain



# State of Play in 2025 and successes of CCAM research and innovation in Europe



**SINFONICA:**  
3,8 millions  
28 August,  
Brussels

Engages  
stakeholders to  
gather CCAM-  
related needs

**CONNECT:**  
5,6 millions  
22 September,  
online

Convergence of  
safety and  
security

**Althena**  
6 millions  
2 October,  
Brussels

The basis of  
trustworthy AI

**CONDUCTOR  
& IN2CCAM**  
6 & 5,5 millions  
22 October,  
Brussels

Fleet and traffic  
management,  
integration and  
interoperability

**AI4CCAM:**  
6 millions  
17-18  
November,  
Brussels

Develops a  
trustworthy AI  
environment

**Hi-Drive:**  
60 millions  
25-27  
November,  
Autoworld,  
Brussels

Testing high  
automation.

**PoDIUM**  
12,2 millions  
End of  
November

PDI connectivity  
and cooperation  
enablers

**AUGMENTED  
CCAM:**  
11 millions  
15-18  
December,  
Paris

Innovative  
infrastructure  
solutions

# ERTRAC CAD WG & CCAM PARTNERSHIP: A COMPLEMENTARY APPROACH.

The ERTRAC Roadmap is the position of the independent technology platform aiming at drawing the overall longterm picture as well as the concrete next steps referring to Ambitious and realistic use cases.

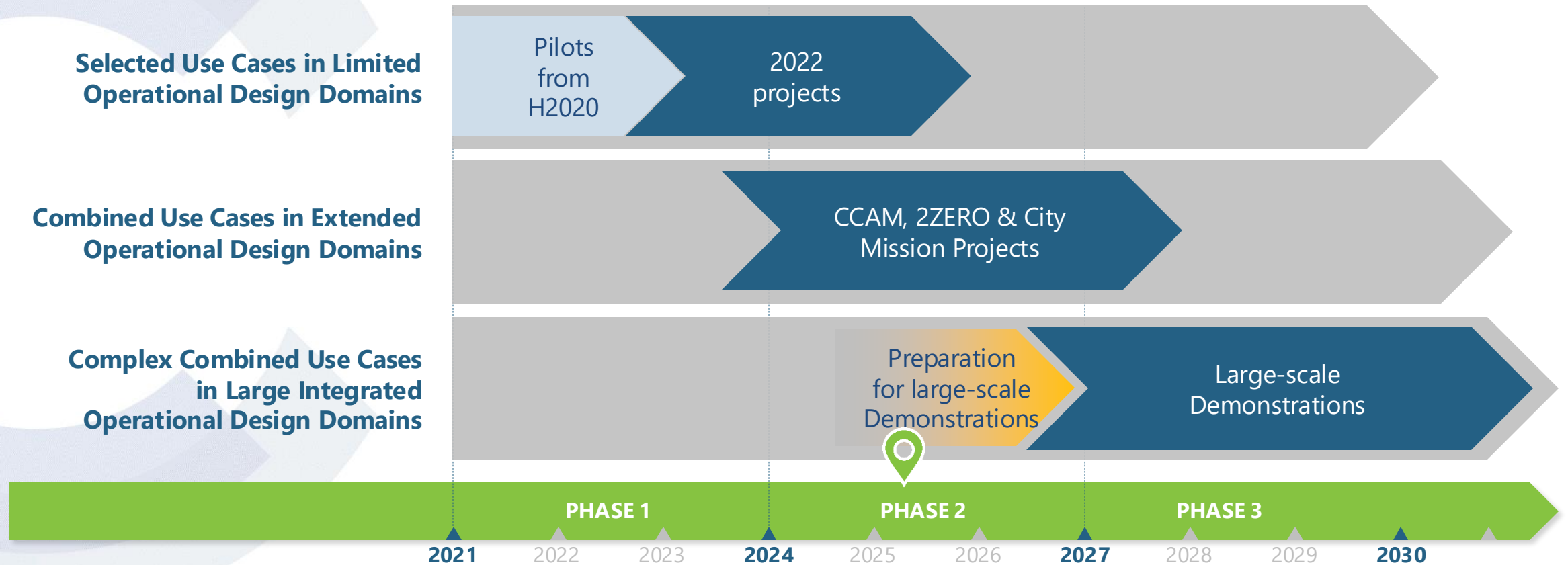


The SRIA is the reference document of the partnership aiming at identifying research and innovation priorities, detailing the expected impacts as well as the Key Performance Indicators.






# CCAM partnership culminates in large-scale demonstrations

## Cluster 1: Large-scale Demonstrations





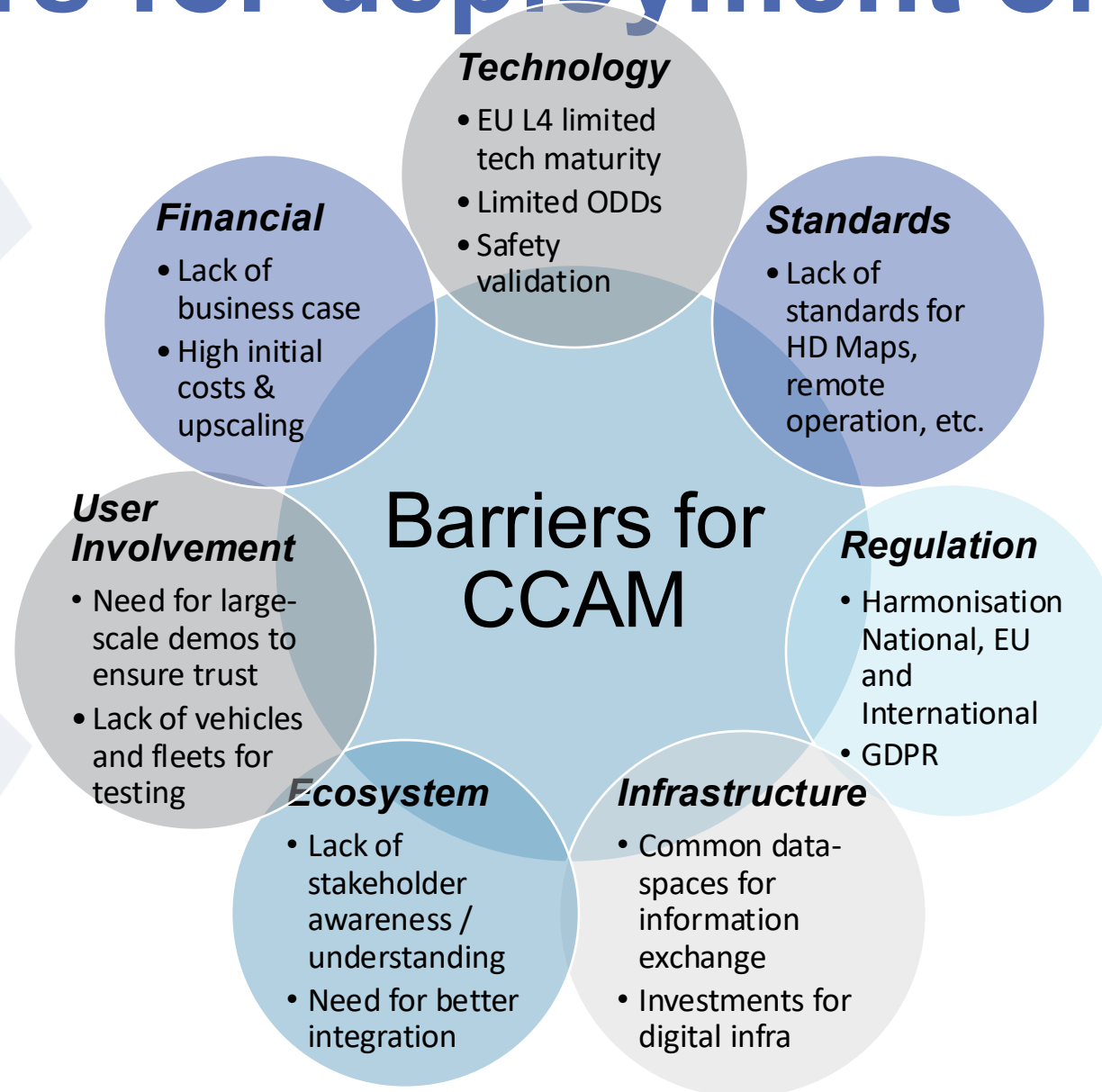
# Various factors influencing the competitiveness of CCAM-solutions and services in the EU, US and CN

			
<b>Focus &amp; Motivation</b>	<ul style="list-style-type: none"> <li>• Solving problems of transport sector (accidents, congestion)</li> <li>• Use-case urban shuttle, L3 motorway</li> <li>• Expertise in validation/methods</li> </ul>	<ul style="list-style-type: none"> <li>• Global lead with long-term max. RoI/profits</li> <li>• Use-cases: Robo-taxi (driver: convenience), hub2hub transportation (driver: savings of driver salary)</li> </ul>	<ul style="list-style-type: none"> <li>• Independent Automation technology</li> <li>• Use-cases: Robo-taxi (driver: price), hub2hub transportation (driver: savings of driver salary)</li> </ul>
<b>Financing</b>	<ul style="list-style-type: none"> <li>- Lack of venture capital &amp; according spirit</li> <li>- Less private capital compared to US, less public funding compared to CN</li> </ul>	<ul style="list-style-type: none"> <li>+ Excessive venture capital, risk capital culture</li> <li>+ “deep pocket” companies (Google, Tesla, Amazon, Apple,...)</li> </ul>	<ul style="list-style-type: none"> <li>+ Huge federal province and state investment (5-year plan prio)</li> <li>+ Private and governmental capital</li> </ul>
<b>IP</b>	+/- Still fair but share degrading	+ Good	+ Leading
<b>Regulation &amp; supporting policies</b>	<ul style="list-style-type: none"> <li>+ EC attempts to support, integrate &amp; harmonize</li> <li>+ High legal security</li> <li>- Member states priority, emphasis &amp; will to harmonize are divers</li> <li>- Fragmented and low funding</li> </ul>	<ul style="list-style-type: none"> <li>+ (almost) everything allowed if not prohibited (requiring risk-taking attitude)</li> <li>- No focus on stakeholder-alignment, social benefits and integrative actions</li> <li>- Guiding principle: the winner takes it all</li> </ul>	<ul style="list-style-type: none"> <li>+ AV-tech is declared key-priority</li> <li>+ Good for CN-based players (SOE); high barriers for foreign players</li> </ul>
<b>AI, data &amp; compute</b>	<ul style="list-style-type: none"> <li>- Lack of resources; AI may not applied for automated driving as free as in US &amp; CN</li> <li>- Limited data base e.g. not sufficient for training</li> <li>- IC and SoC dependence</li> </ul>	<ul style="list-style-type: none"> <li>+ Rapidly evolving technology</li> <li>+ Huge resources of academia and industry</li> <li>+ World class compute capacity (HW)</li> <li>+ OEM driven excellent data base</li> <li>+ AI early developed/exported ww</li> </ul>	<ul style="list-style-type: none"> <li>+ Recognized as key technology</li> <li>- Catching up with US; US-IC performance not matched, yet</li> <li>+ Data base excellent</li> </ul>



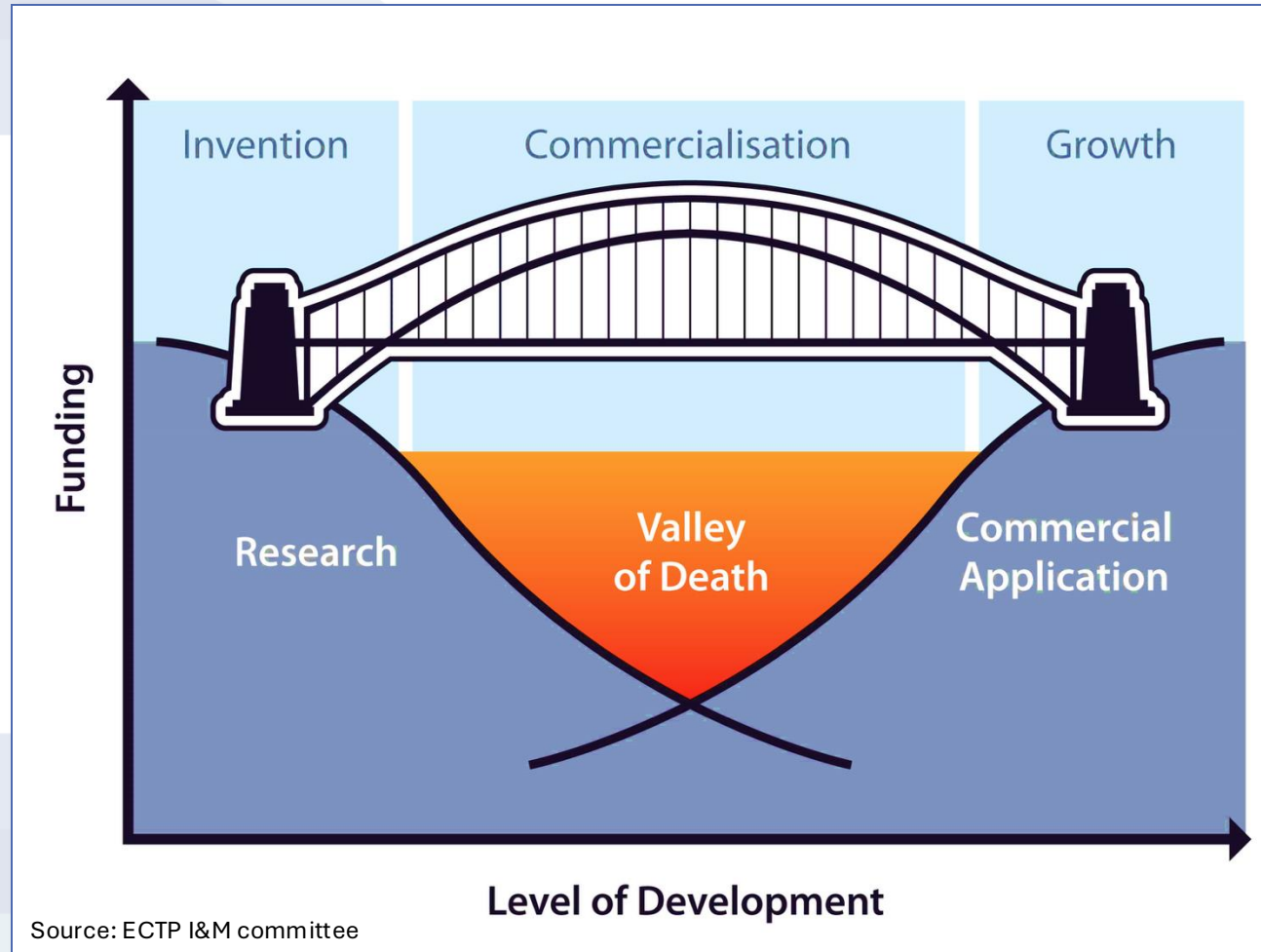
Key factors echoed in the Draghi Report

# Barriers for deployment of CCAM





# Stepping forward crossing the bridge with complementing collaboration formats ...



- European coalition of transport providers for the deployment of automated road mobility

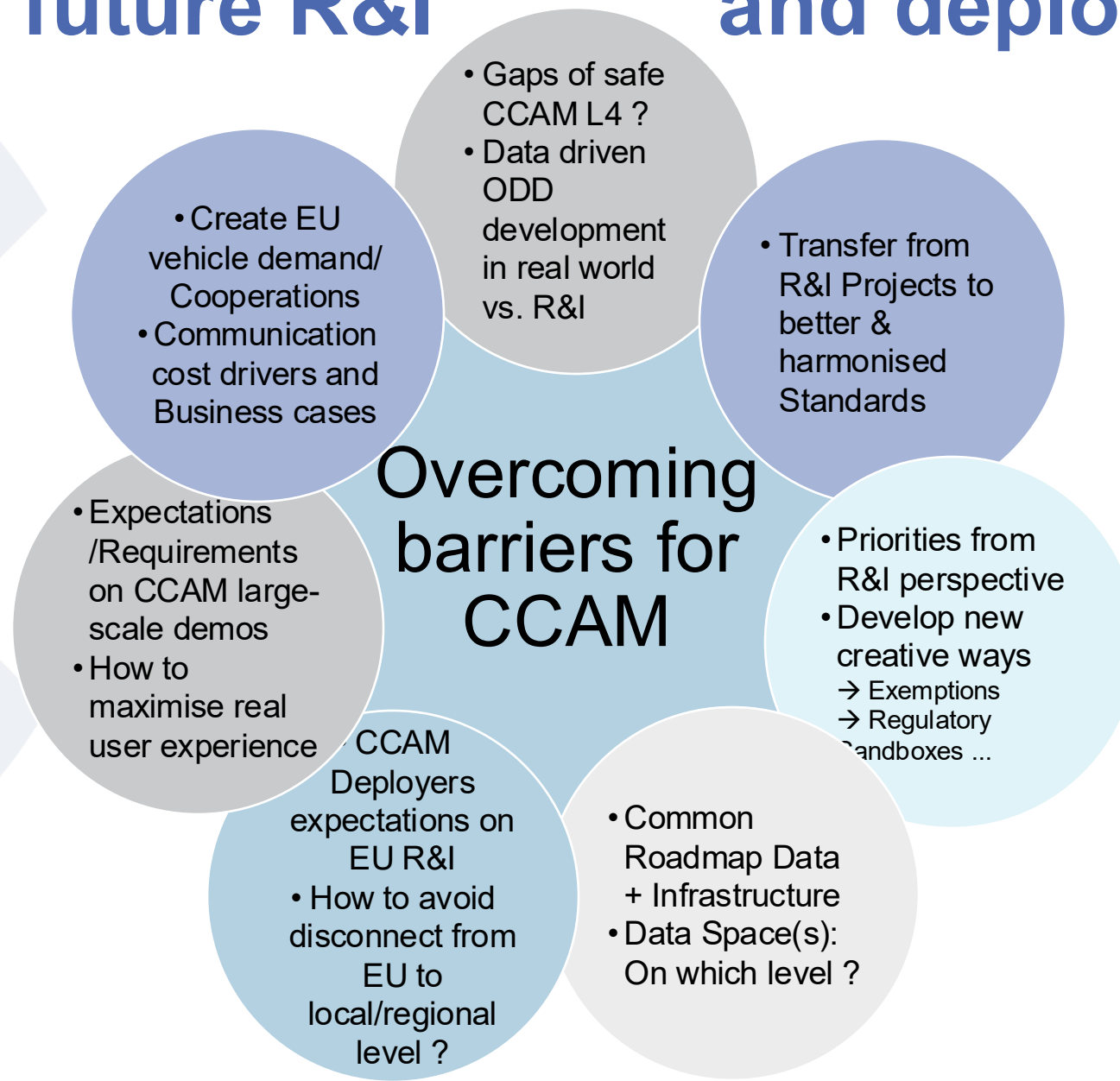


- CCAM Cities & Regions: Call for expression of interest



- Action Plan: Large Scale Testbeds, Regulatory Sandboxes, harmonized Regulation etc.
- Further Flexibility of Funding Instruments

# Key questions how to accelerate future R&I and deployment ?



# CCAM

[www.ccam.eu](http://www.ccam.eu)

## THANK YOU!

✉ [marzena.jougounoux@ccam.eu](mailto:marzena.jougounoux@ccam.eu)

✕ @CCAM\_EU



CCAM Association